



上海出入境检验检疫局
机电产品检测技术中心
Machinery & Electrical Products Testing Center
Shanghai Entry-Exit Inspection and Quarantine Bureau

TEST REPORT

NUMBER: 201606292083

DATE: Aug. 9, 2016

Page 1 of 6

ORIGINAL

APPLICANT: NANTONG FUJITSU MICROELECTRONICS CO., LTD.
ADDRESS: NO.288, Chongchuan Road, Chongchuan Economic Development Area,
Nantong, Jiangsu, P.R.China

SAMPLE DESCRIPTION: The following samples were submitted and identified by the applicant as:

Sample Name: DFN6、DFN8

1. silvery metal
2. black plastic

TEST REQUESTED: 1.silvery metal: To determine the contents of lead (Pb), mercury (Hg), hexavalent chromium (Cr⁶⁺), cadmium (Cd), PFOA, PFOS, Sb.
2.black plastic: To determine the contents of Pb, Cd, Hg, Cr⁶⁺, PBBs, PBDEs, DEHP,DBP,BBP,DINP,DIDP,DNOP,DNHP,DIBP,DnPP,PFOS,PFOA, Hexabromocyclododecane (HBCDD), Sb, F,Cl,Br,I,

TEST METHOD: Please refer to the next pages.

TESTING PERIOD: Aug. 3, 2016 –Aug. 9, 2016

RESULT: Please refer to next pages.

Authorized sign:

DAI XUEWEI

NOTE: ALL TEST RESULTS ARE ONLY VALID FOR THE SAMPLES BEING TESTED. THIS TEST REPORT SHALL NOT BE REPRODUCED EXCEPT IN FULL,WITHOUT THE WRITTEN APPROVAL OF THE TESTING LABORATORY.



TEST REPORT

NUMBER: 201606292083

DATE: Aug. 9, 2016

Page 2 of 6

ORIGINAL

TEST RESULTS:

Testing Item	Equipment	Test Method	Test Result	
			Sample 1	Sample 2
Pb	AAS	IEC62321-5: 2013	21 mg/kg (< 1 mg/kg)	N.D.(< 1 mg/kg)
Cd	AAS	IEC62321-5: 2013	N.D.(< 1 mg/kg)	N.D.(< 1 mg/kg)
Hg	ICP-OES	IEC62321-4: 2013	N.D.(< 1 mg/kg)	N.D.(< 1 mg/kg)
Cr ⁶⁺	UV	IEC62321 Edition 1.0: 2008	Negative #	N.D.(< 1 mg/kg)
PBBs	-	-	-	-
Bromobiphenyl	GC-MS	IEC62321-6: 2015	No requested	N.D.(< 5 mg/kg)
Dibromobiphenyl	GC-MS	IEC62321-6: 2015		N.D.(< 5 mg/kg)
Tribromobiphenyl	GC-MS	IEC62321-6: 2015		N.D.(< 5 mg/kg)
Tetrabromobiphenyl	GC-MS	IEC62321-6: 2015		N.D.(< 5 mg/kg)
Pentabromobiphenyl	GC-MS	IEC62321-6: 2015		N.D.(< 5 mg/kg)
Hexabromobiphenyl	GC-MS	IEC62321-6: 2015		N.D.(< 5 mg/kg)
Heptabromobiphenyl	GC-MS	IEC62321-6: 2015		N.D.(< 5 mg/kg)
Octabromobiphenyl	GC-MS	IEC62321-6: 2015		N.D.(< 5 mg/kg)
Nonabromobiphenyl	GC-MS	IEC62321-6: 2015		N.D.(< 5 mg/kg)
Decabromobiphenyl	GC-MS	IEC62321-6: 2015		N.D.(< 5 mg/kg)
PBDEs	-	-	-	-
Bromodiphenyl ether	GC-MS	IEC62321-6: 2015	No requested	N.D.(< 5 mg/kg)
Dibromodiphenyl ether	GC-MS	IEC62321-6: 2015		N.D.(< 5 mg/kg)
Tribromodiphenyl ether	GC-MS	IEC62321-6: 2015		N.D.(< 5 mg/kg)
Tetrabromodiphenyl ether	GC-MS	IEC62321-6: 2015		N.D.(< 5 mg/kg)
Pentabromodiphenyl ether	GC-MS	IEC62321-6: 2015		N.D.(< 5 mg/kg)
Hexabromodiphenyl ether	GC-MS	IEC62321-6: 2015		N.D.(< 5 mg/kg)
Heptabromodiphenyl ether	GC-MS	IEC62321-6: 2015		N.D.(< 5 mg/kg)
Octabromodiphenyl ether	GC-MS	IEC62321-6: 2015		N.D.(< 5 mg/kg)
Nonabromodiphenyl ether	GC-MS	IEC62321-6: 2015		N.D.(< 5 mg/kg)
Decabromodiphenyl ether	GC-MS	IEC62321-6: 2015		N.D.(< 5 mg/kg)

0223418



上海出入境检验检疫局
机电产品检测技术中心
Machinery & Electrical Products Testing Center
Shanghai Entry-Exit Inspection and Quarantine Bureau

TEST REPORT

NUMBER: 201606292083

DATE: Aug. 9, 2016

Page 3 of 6

ORIGINAL

TEST RESULTS:

Testing Item	Equipment	Test Method	Test Result	
			Sample 1	Sample 2
DEHP	GC-MS	IEC62321-8(111/321/CD)	No requested	N.D.(< 50 mg/kg)
DBP	GC-MS	IEC62321-8(111/321/CD)		N.D.(< 50 mg/kg)
BBP	GC-MS	IEC62321-8(111/321/CD)		N.D.(< 50 mg/kg)
DINP	GC-MS	IEC62321-8(111/321/CD)		N.D.(< 50 mg/kg)
DIDP	GC-MS	IEC62321-8(111/321/CD)		N.D.(< 50 mg/kg)
DNOP	GC-MS	IEC62321-8(111/321/CD)		N.D.(< 50 mg/kg)
DNHP	GC-MS	IEC62321-8(111/321/CD)		N.D.(< 50 mg/kg)
Diisobutyl phthalate (DIBP)	GC-MS	IEC62321-8(111/321/CD)		N.D.(< 50 mg/kg)
DnPP	GC-MS	IEC62321-8(111/321/CD)		N.D.(< 50 mg/kg)
PFOS	LCMS	EPA 3540C	N.D.(< 2 mg/kg)	N.D.(< 2 mg/kg)
PFOA	LCMS	EPA 3540C	N.D.(< 2 mg/kg)	N.D.(< 2 mg/kg)
Hexabromocyclododecane (HBCDD)	GC-MS	EPA 3540C		N.D.(< 1 mg/kg)
F	IC	EN 14582: 2007	No requested	N.D.(< 10 mg/kg)
Cl	IC	EN 14582: 2007		48 mg/kg (< 10 mg/kg)
Br	IC	EN 14582: 2007		N.D.(< 10 mg/kg)
I	IC	EN 14582: 2007		N.D.(< 10 mg/kg)
Sb	ICP-OES	-	N.D.(< 2 mg/kg)	N.D.(< 2 mg/kg)

REMARK:

= Testing Cr⁶⁺ by IEC 62321:2008 Annex B and the result is showed as Positive/Negative

Negative = Absence of Cr⁶⁺, which means that the Cr⁶⁺ concentration in extraction solution is less than 0.02 mg/kg with 50 cm² sample surface area

Positive = Presence of Cr⁶⁺, which means that the Cr⁶⁺ concentration in extraction solution is equal or greater than 0.02 mg/kg with 50 cm² sample surface area

mg/kg = ppm ; ND = Not detected

地址/Address: 上海市浦东新区民生路 1208 号 (200135) /No. 1208, Minsheng Road, Shanghai, (200135)P.R.China

电话/Tel: +86 21 6854 9667 传真/Fax: +86 21 6854 9665 邮箱/Email: SMEC@shciq.gov.cn 网址/Website: www.shciq.gov.cn:8018/SMEC

MECT-0-151-01

0223419

TEST REPORT

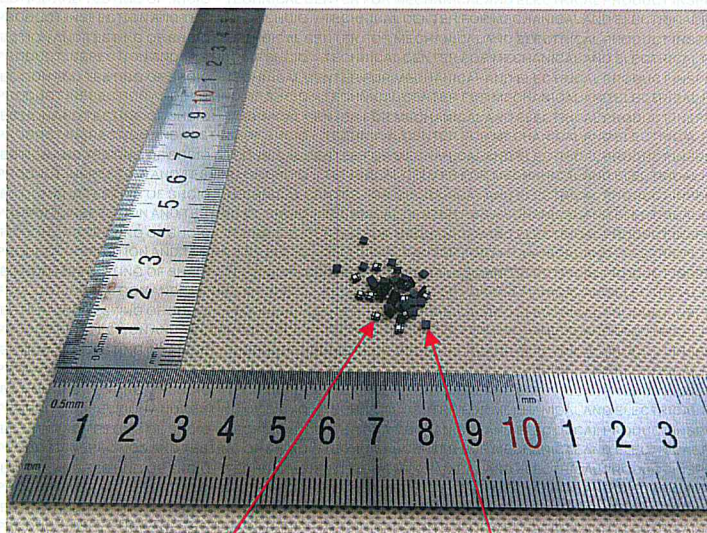
NUMBER: 201606292083

DATE: Aug. 9, 2016

Page 4 of 6

ORIGINAL

Sample photo



Silvery metal

Black plastic

TEST REPORT

NUMBER: 201606292083

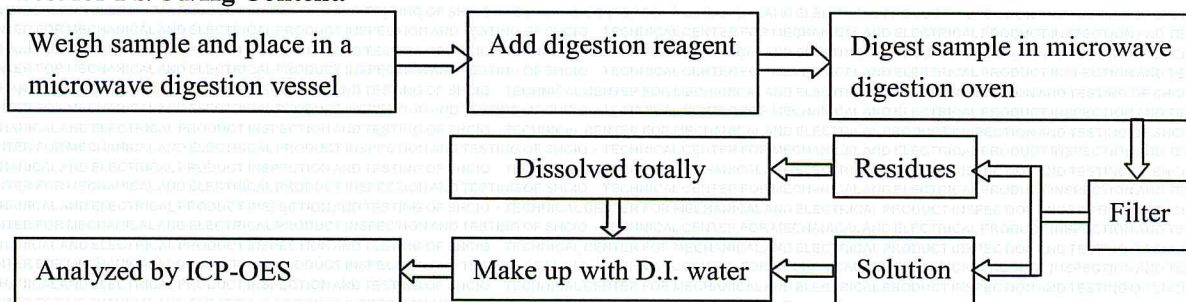
DATE: Aug. 9, 2016

Page 5 of 6

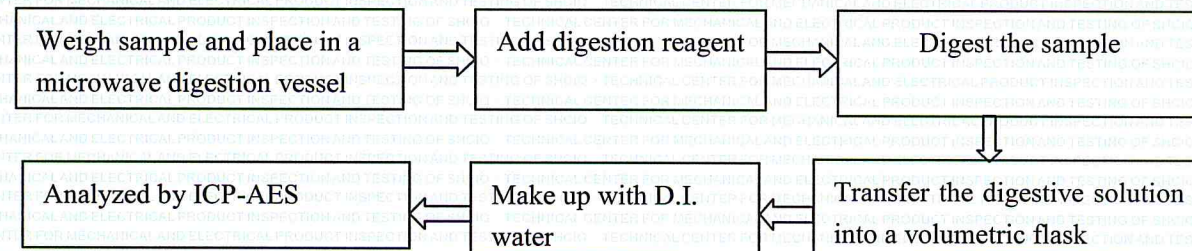
ORIGINAL

Test Process:

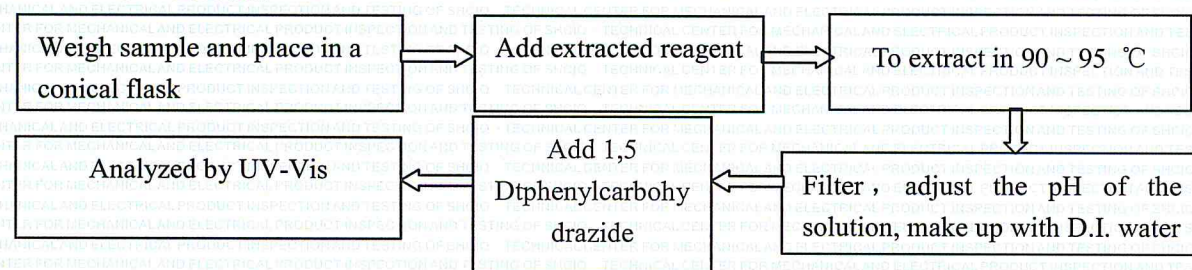
Test for Pb/Cd/Hg Content.



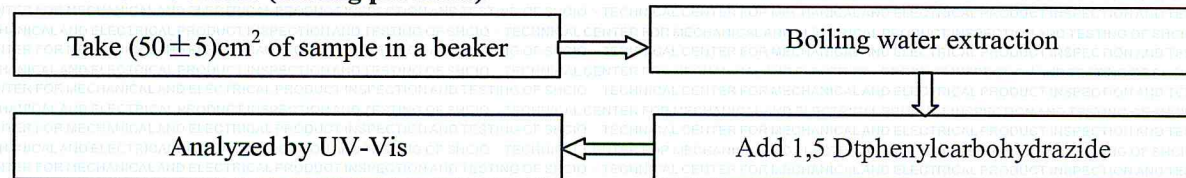
Test for Pb/Cd/Hg Content (Metal).



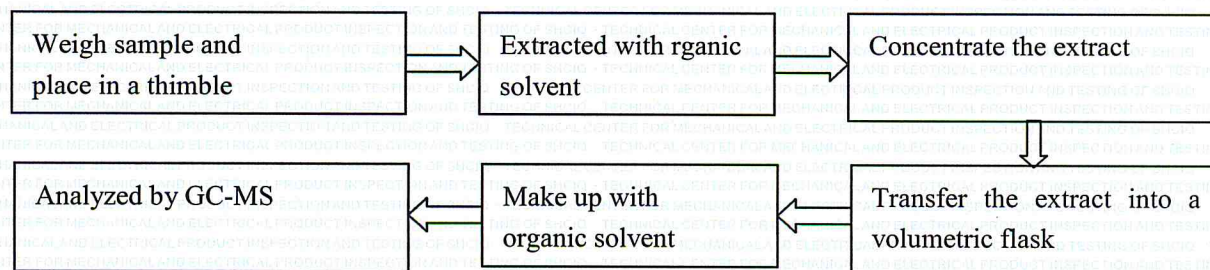
Test for Cr⁶⁺ Content.



Test for Cr⁶⁺ Content (Plating products).



Test for PBBs /PBDEs Content.



TEST REPORT

NUMBER: 201606292083

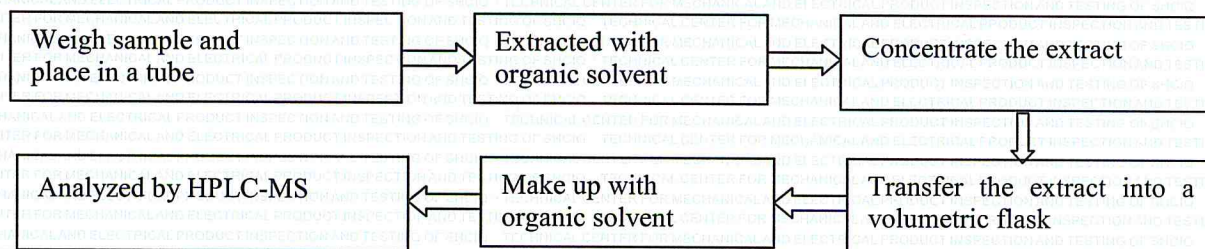
DATE: Aug. 9, 2016

Page 6 of 6

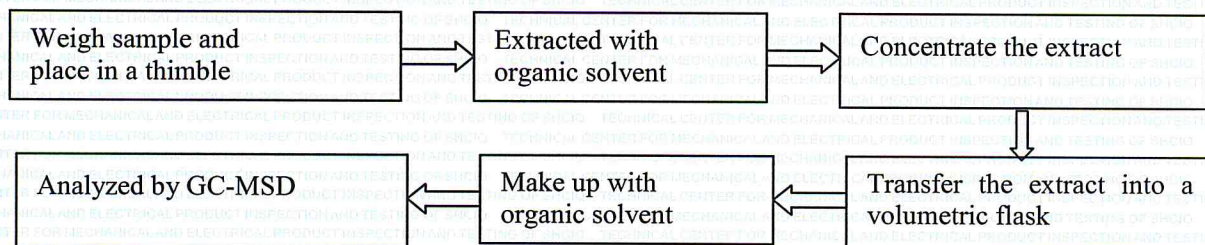
ORIGINAL

Test Process :

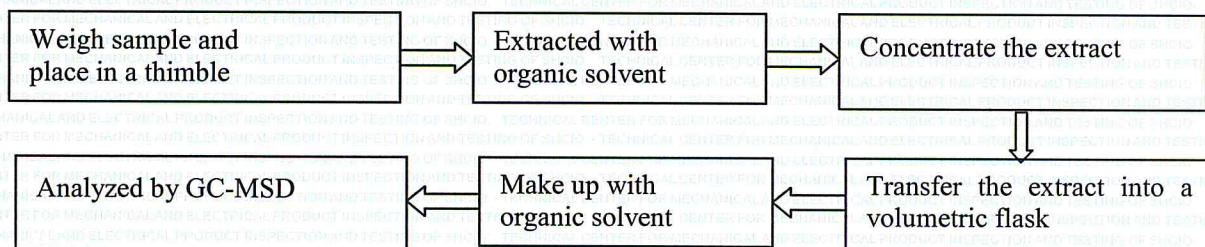
Test for PFOA, PFOS Content.



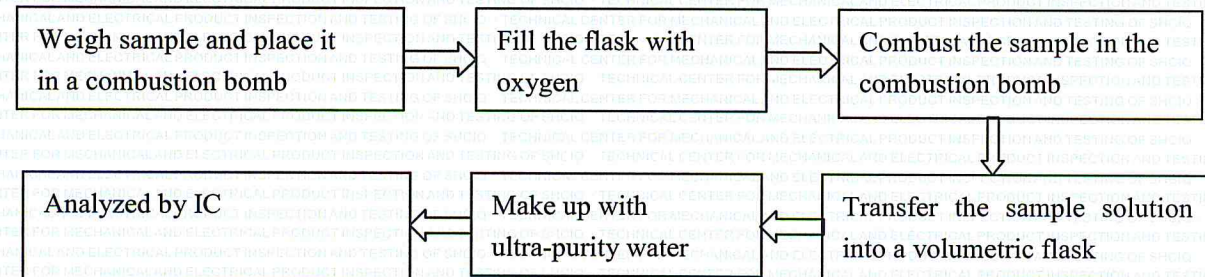
Test for phthalates Content.



Test for HBCDD Content.



Test for Halogen (F, Cl, Br, I) Content.



*****End of Report*****